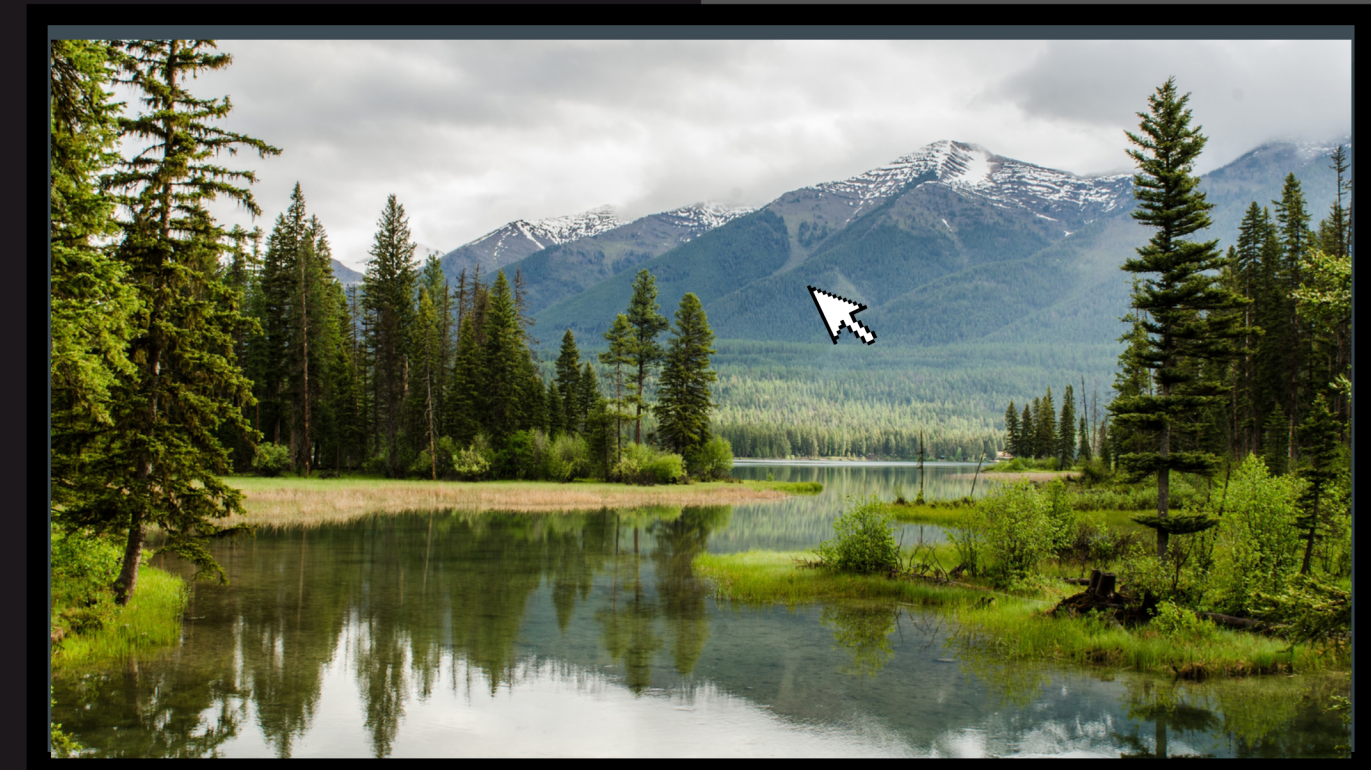



TRAINING SESSION

CLASSROOM CASTING METHODS

This training session aims to provide Faculty with a complete understanding of how to share their screen to the classroom televisions via any Microsoft or Apple device.



- 
- Casting: The act of transferring the display from one device to another, either through a wired connection or wirelessly.



- Miracast: The built in function for wireless casting with **Windows** devices.



- Screen Mirroring: The built in function for wireless casting with **Apple** devices.

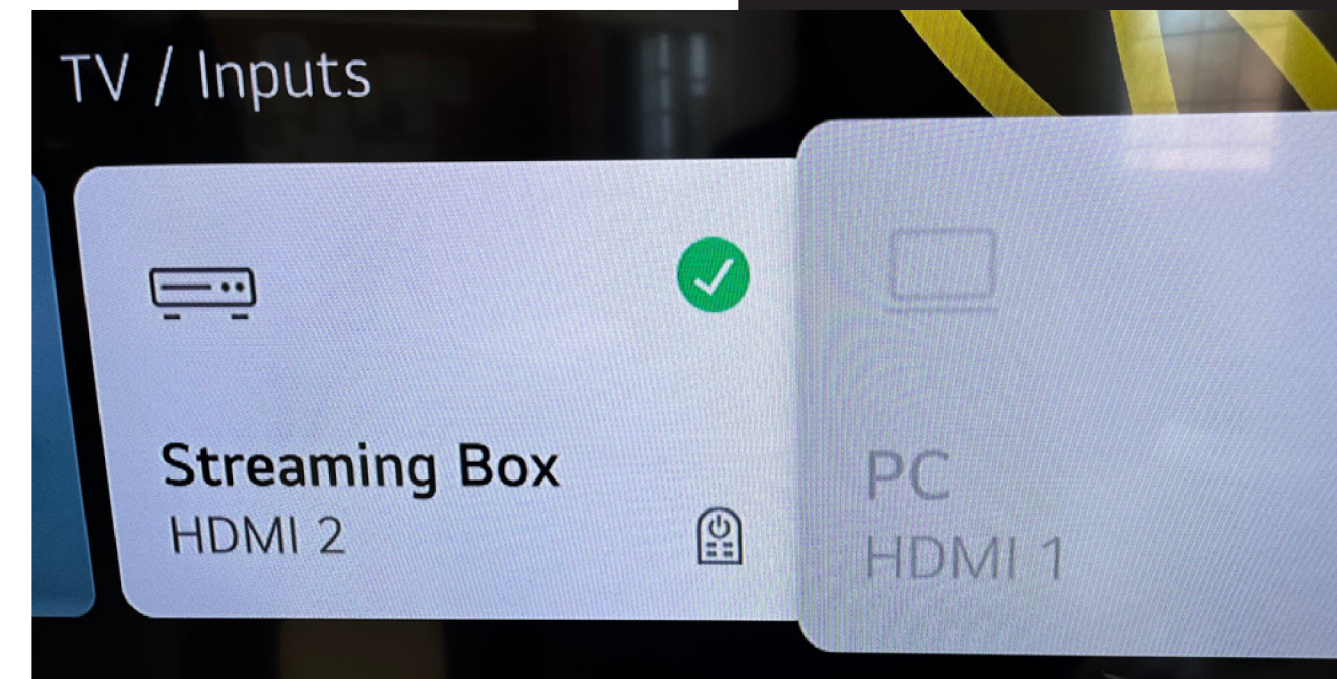
- Google devices are not supported.

- Airtame: A device that is connected to the television that allows for wireless casting.

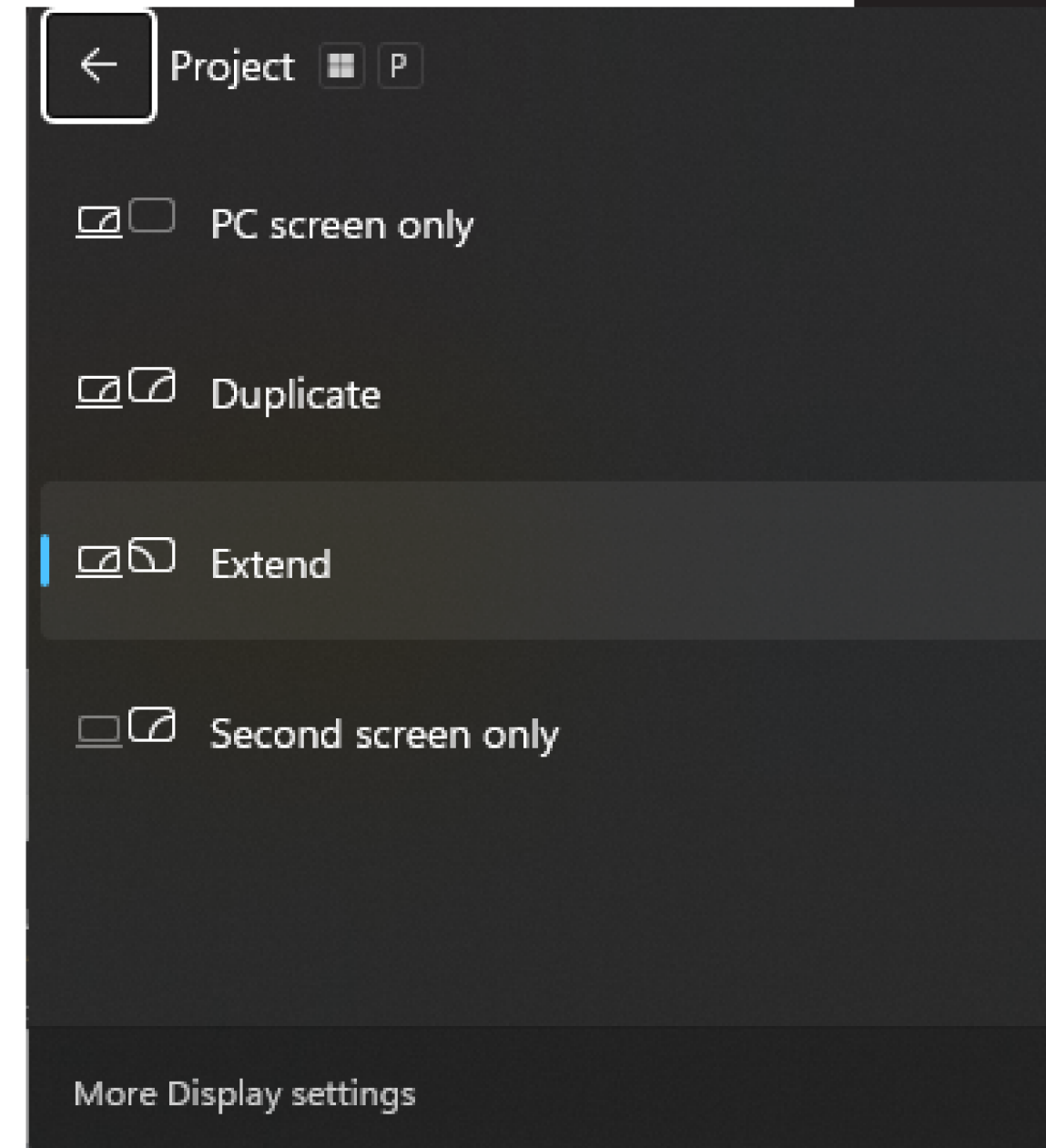




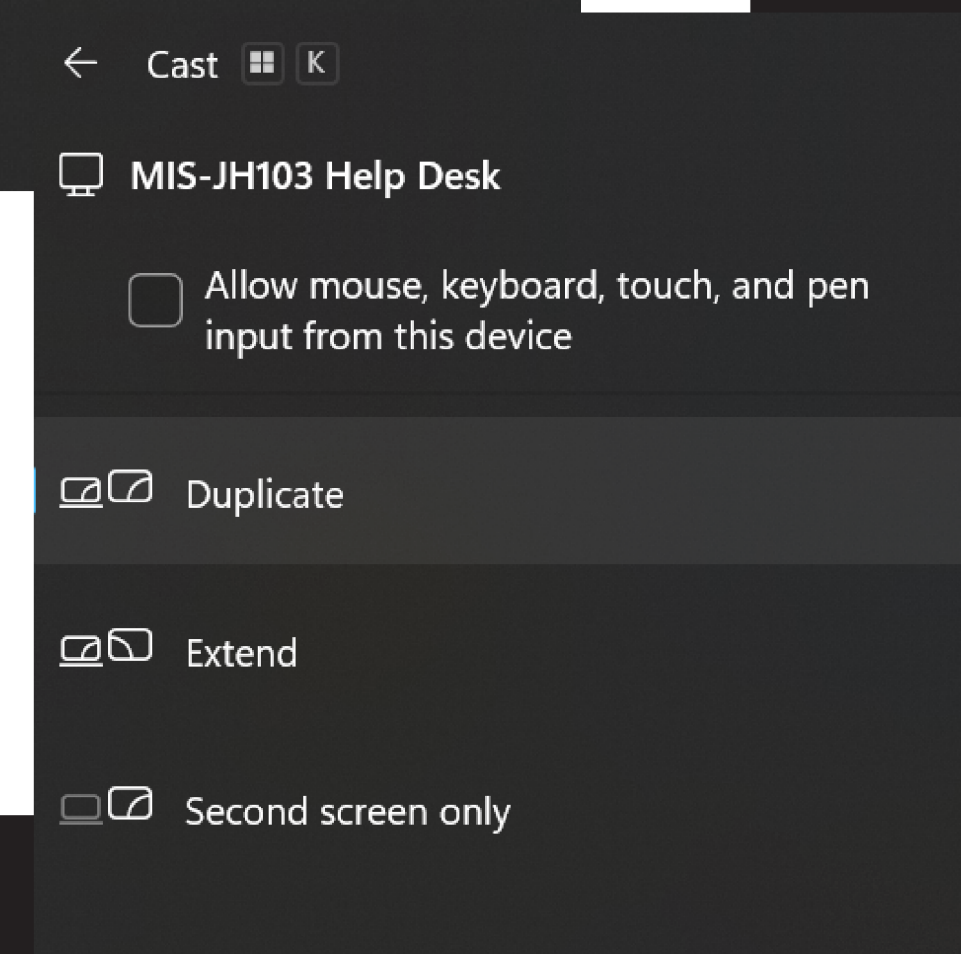
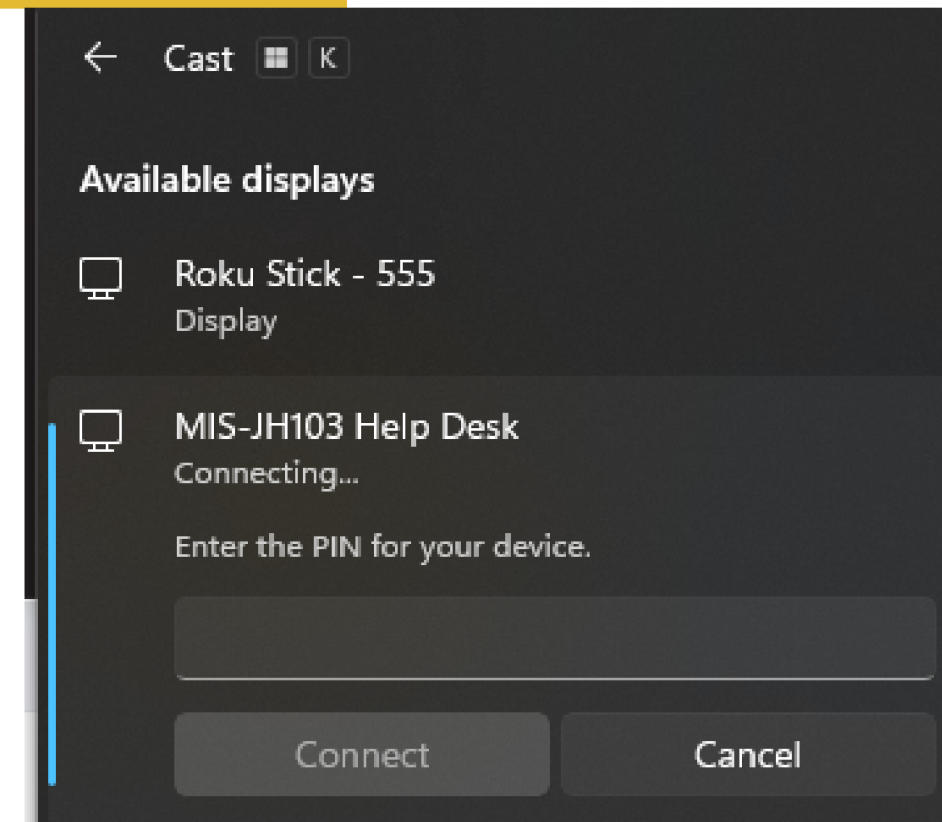
- Turn on the television and click the input button on the remote.
- If you would like to use the HDMI cord to cast, select **HDMI 1** on the TV and plug the cord into your laptop. If you plug in while the TV is on HDMI 2, it will ask if you would like to switch. Click Yes.
- If you would like to cast wirelessly with Miracast, Screen Mirroring, or Airtame in the browser, select **HDMI 2** on the TV.



- After you plug the HDMI cord into your laptop, you can press Windows + P on your keyboard to choose your display settings. For Macs, press Command + F1 to toggle between mirrored and extend or go to System Settings > Displays. If the Mac has a touchbar, try Command + the dim brightness button.
 - Duplicate = The laptop and TV display the same thing.
 - Extend = The TV will act as a second monitor.
- Your PowerPoint should automatically extend when you change to presenter view, even if your display is set to duplicate. This only applies to the PowerPoint application.



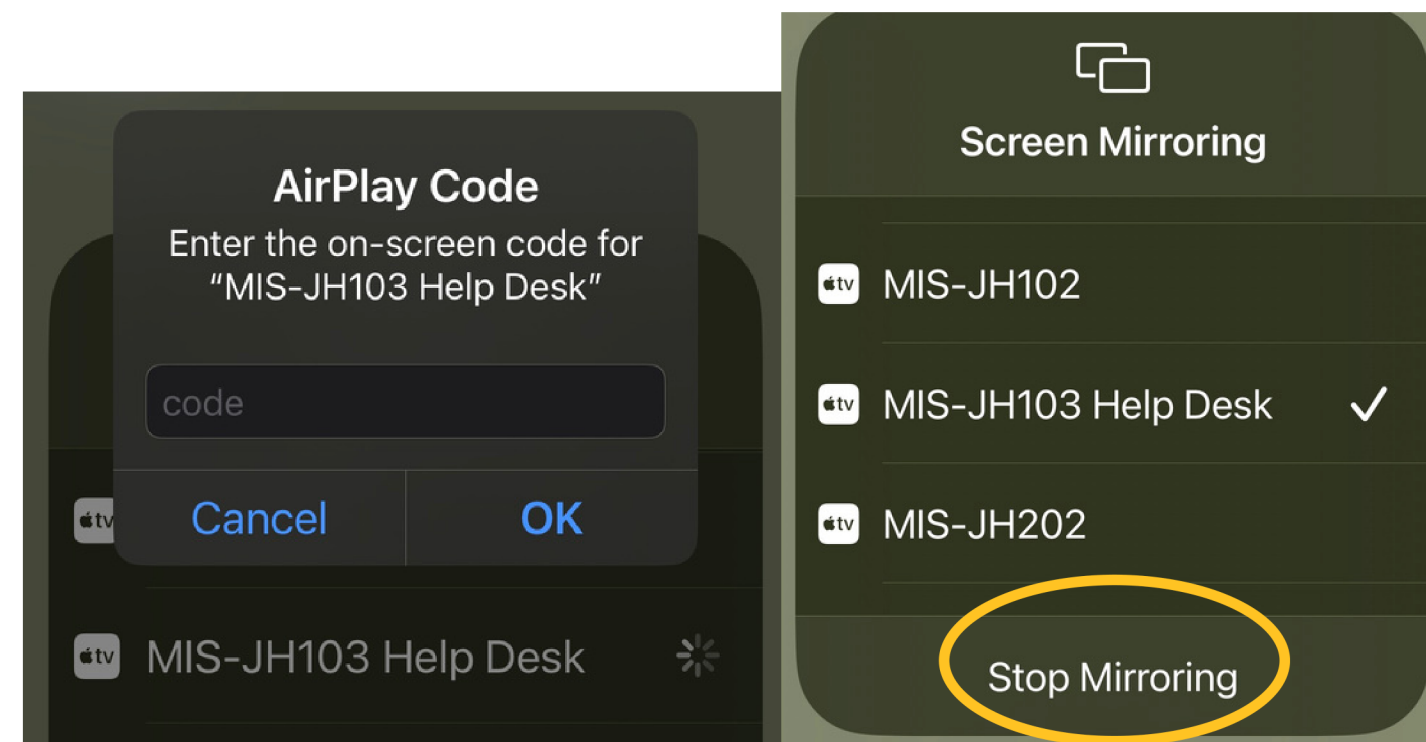
- Click Windows + K on your keyboard.
- Click on the available display that corresponds to the classroom number.
- Enter the PIN that appears on the television.
- After connecting, the Miracast menu should provide options to change the display settings. If it does not, you should be able to click 'Change projection mode' or click Windows + P to bring them up.
- Click Disconnect when you are done casting.



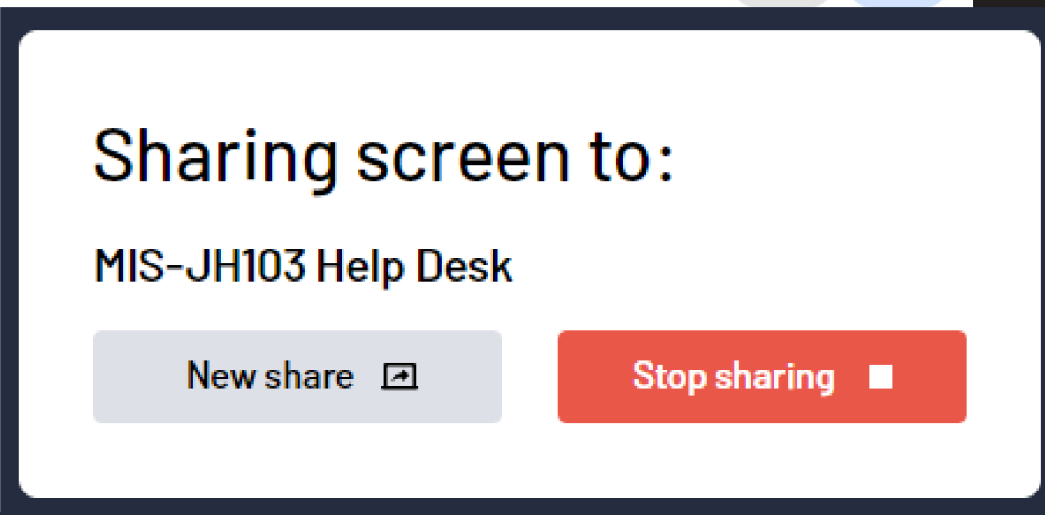
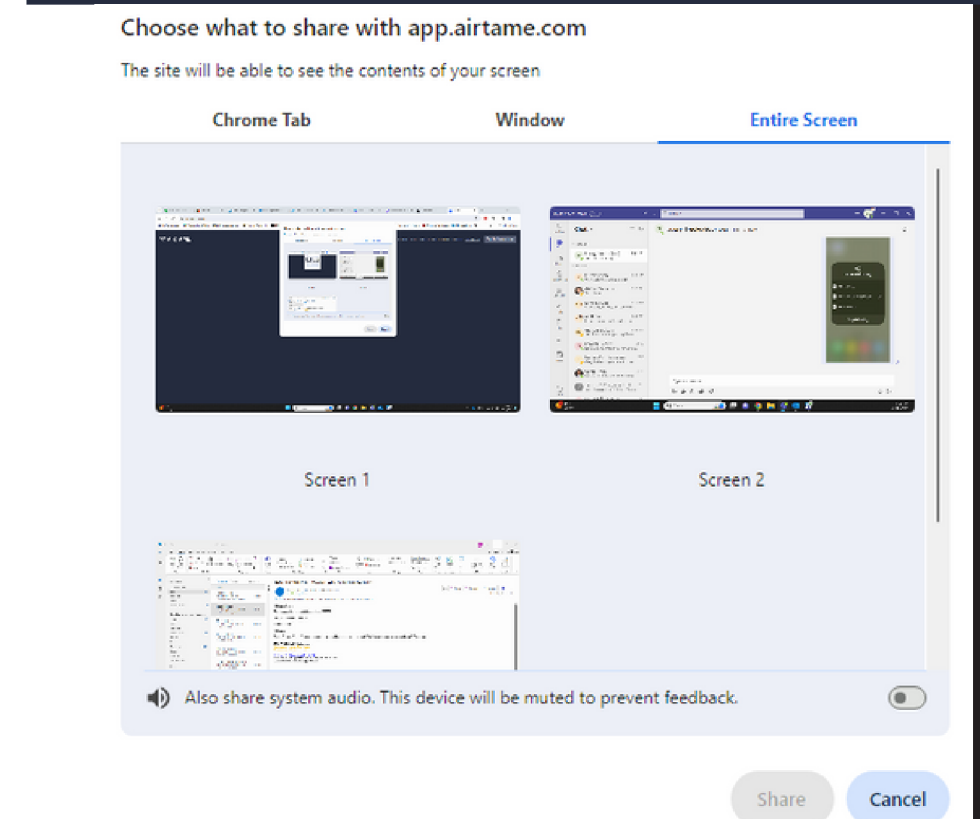
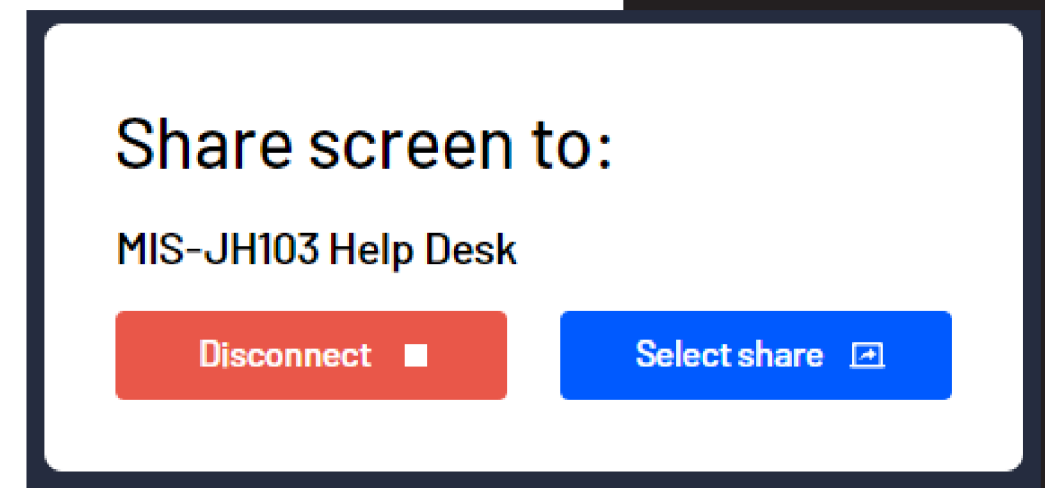
Disconnect




- Click on the Screen Mirroring icon on your Apple device as shown in the two pictures to the right.
- Click on the available display that corresponds to the classroom number.
- Enter the code that appears on the television.
- To stop mirroring, click the Screen Mirroring icon again and 'Stop Mirroring.'



- There is no option to ‘extend’ your screen with the Airtame option. It is only for mirroring. We recommend presenting PowerPoints with HDMI cable, Miracast, or Screen Mirroring instead.
- Go to airtame.com/go and type in the code shown on the television.
- Click ‘Select share.’
- You can choose to share individual browser tabs, an entire Window, or the full screen.
- If you would like to share audio, you can only do so when sharing a tab or the entire screen.



- 
- If both TVs are switched to HDMI 1, you can plug the cord into your laptop and project your screen on both TVs.
 - If both TVs are switched to HDMI 2, you can use any of the wireless casting methods to project your screen on both TVs.
 - One TV may be on HDMI 1 and the other on HDMI 2 if you would like to project two different screens in the classroom.






Mersive Solstice

- For multipurpose spaces (Lecture Halls, Collaboration Spaces, Large Venues).
- ‘How Employees connect to Mersive’ article available on techsupport.pfeiffer.edu.

Poly Studio with Microsoft Teams

- For reserved conference rooms.
- User guide documentation will be available on techsupport.pfeiffer.edu soon.

- 
- Some classrooms have **soundbars**. The soundbars have separate remotes. Once they are turned on, there is no configuration needed on the laptop except for adjusting the volume to suit the videos you play. You can also adjust the volume of the soundbar using its remote.
 - Please return the HDMI cable to the white hook that is secured to the wall.
 - Please return the remote control to the velcro piece that is secured to the wall.
 - There are **USB-C adapters** fastened to the end of the HDMI cord if your laptop does not have an HDMI port.



Classroom Casting Training

THANK YOU
FOR ATTENDING

Office of Information Technology

For technical support, don't hesitate to get in touch with the Help Desk at 704-463-3002 or email us at techsupport@pfeiffer.edu.

